

DualPhase™ 2-way Antenna With Electrical Down Tilt & Beam Steering



HB-X-AW-17-65-00T

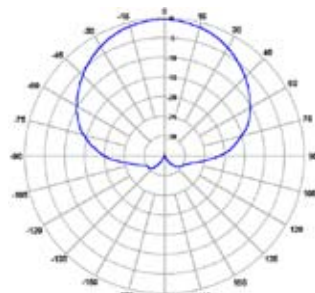
1710 ~ 2170MHz, X-pol., H65° / V7°

Electrical Specification

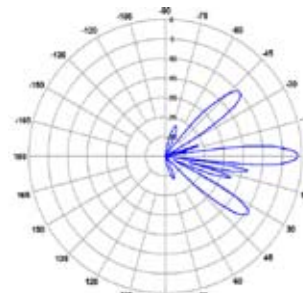
Frequency Range	1710~1880MHz	1850~1990MHz	1920~2170MHz
Gain	17.0 dBi	17.2 dBi	17.5 dBi
Beam Width	Horizontal	67°	63°
	Vertical	7.8°	7.2°
Impedance	50Ω		
VSWR	≤1.4:1		
Polarization	Dual, Slant ±45°		
Upper 1 st Sidelobe Suppression	≥18 dB (@ downtilt 0°)		
Front-to-Back Ratio	≥25 dB		
Cross Polarization Ratio	≥18 dB		
Adjustable Downtilt Range	0° ~ 15°		
Horizontal Beam Steering	-30° ~ 30°		
Port-to-port Isolation	≥30 dB		
Passive Intermodulation, IM3	≤ -150 dBc		
Input Maximum CW Power	250 W		
Control Interface	Feeder Line through Bias-T		

Mechanical Specification

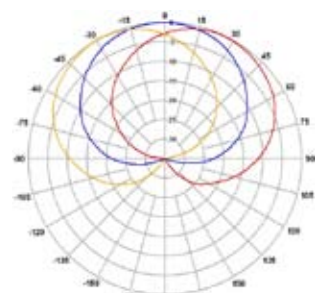
Dimension (DiameterxH)	156x1219mm (6.2x48inch)
Weight (Without Clamp)	9.0 kg (19.84 lb)
Connector	2 × 7/16" Din(F) / Bottom
Max Wind Speed	60m/s (135mph)
Wind Load (@ 100mph)	43.82 lbf (194.85 N)



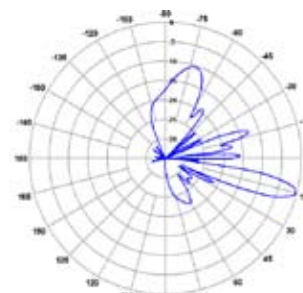
Horizontal Pattern



Vertical Pattern (Downtilt 0°)



Horizontal Beam Steering



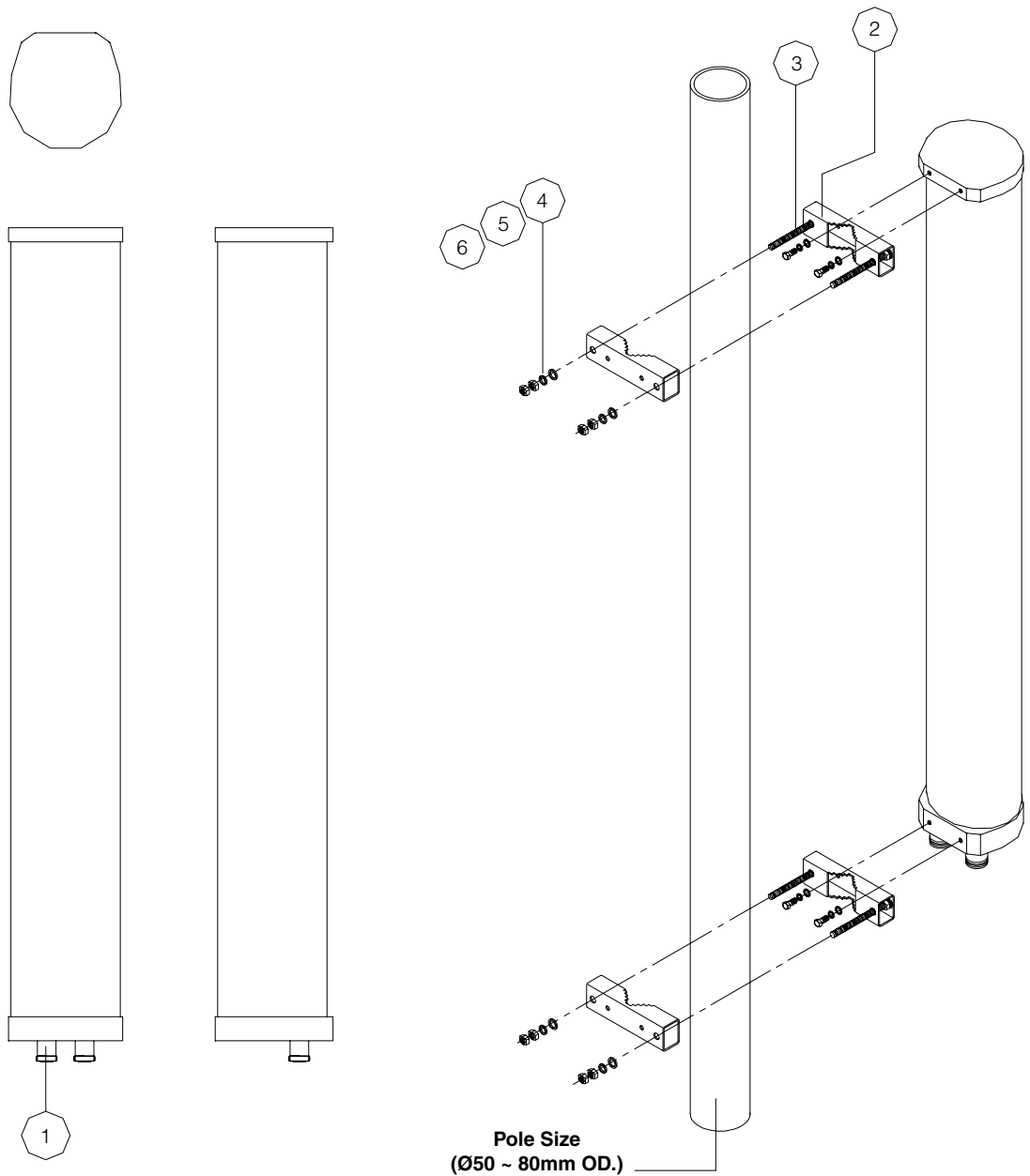
Vertical Pattern (Downtilt 15°)



DualPhase™ 2-way Antenna With Electrical Down Tilt & Beam Steering

HB-X-AW-17-65-00T

1710 ~ 2170MHz, X-pol., H65° / V7°



No.	Part Name	Quantity	Recommended Tool & Torque
1.	RF Connector	2	
2.	Mounting Kit	1	
3.	Hex. Cap. Bolt, M10	4	240kgf (min.) 16mm Spanner
4.	Plain Washer, M10	4	
5.	Spring Washer, M10	4	
6.	Hex. Nut, M10	8	