

H3-X-AW-17-65-00T

3-Sector 1710 ~ 2170MHz, X-pol., H65° / V7.5°

DualPhase™ 2-way, 3-Sector
Antenna With Electrical Down Tilt
& Beam Steering

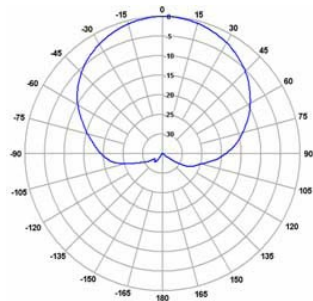


Electrical Specification

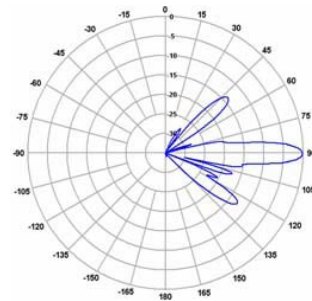
Frequency Range	1710~1880MHz	1850~1990MHz	1920~2170MHz
Gain	17.0 dBi	17.2 dBi	17.5 dBi
Beam Width	Horizontal	67°	63°
	Vertical	7.8°	7.5°
Impedance	50Ω		
VSWR	≤1.4:1		
Polarization	Dual, Slant ±45°		
Upper 1 st Sidelobe Suppression	≥18 dB (@ downtilt 0°)		
Front-to-Back Ratio	≥30 dB		
Adjustable Downtilt Range	0° ~ 15°		
Horizontal Beam Steering	-30° ~ 30°		
Port-to-port Isolation	≥30 dB		
Passive Intermodulation, IM3	≤ -150dBc		
Input Maximum CW Power	250 W		
Control Interface	Feeder Line through Bias-T		

Mechanical Specification

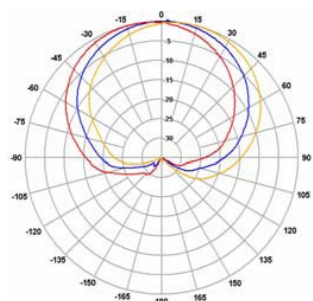
Dimension (Diameter×H)	256×1219mm (10.08×48inch)
Weight (Without Clamp)	22 kg (45.50 lb)
Connector	6 × 7/16" Din(F) / Bottom
Radome Material	FRP
Max Wind Speed	60m/s (135mph)
Wind Load (@ 100mph)	71.80 lbf (319.25 N)



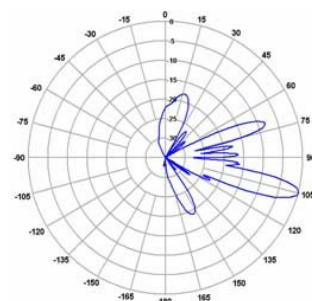
Horizontal Pattern



Vertical Pattern (Downtilt 0°)



Horizontal Beam Steering

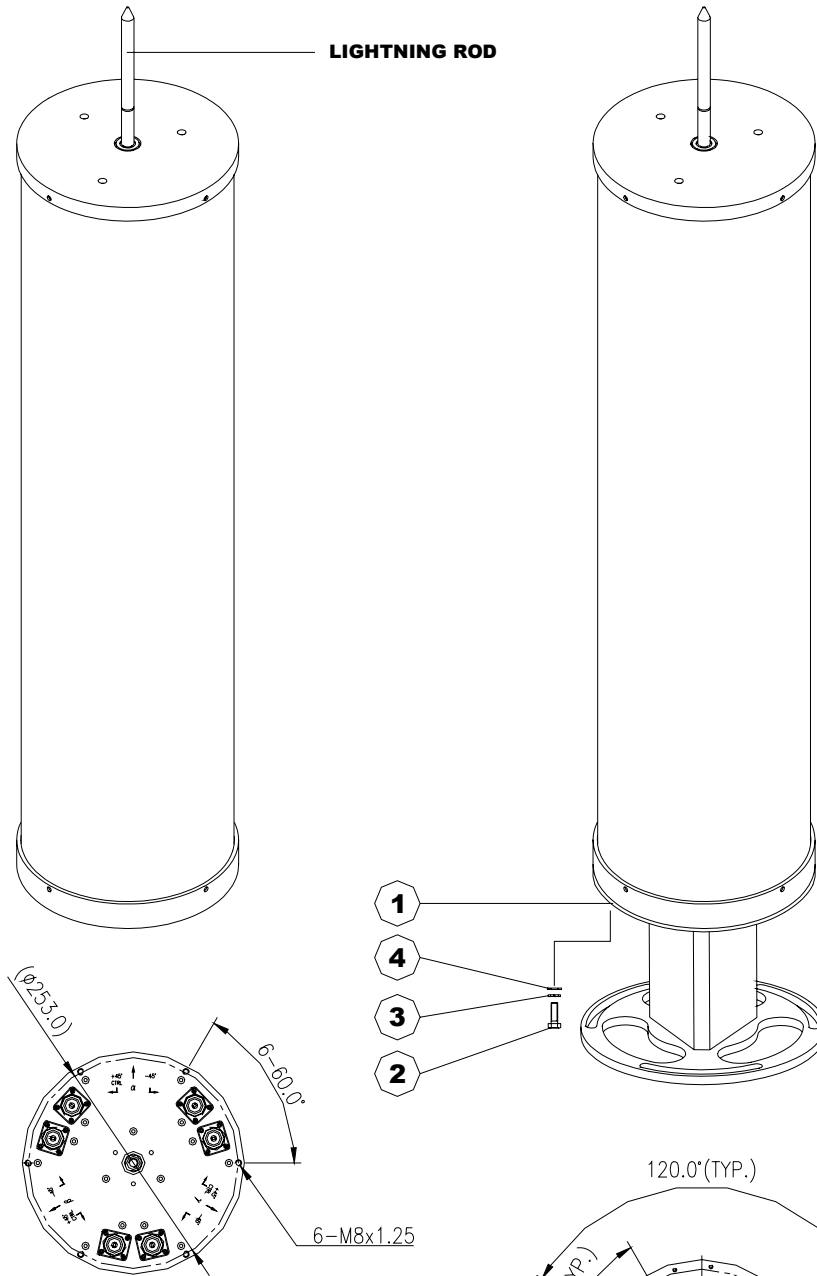


Vertical Pattern (Downtilt 15°)

DualPhase™ 2-way, 3-Sector
Antenna With Electrical Down Tilt
& Beam Steering

H3-X-AW-17-65-00T

3-Sector 1710 ~ 2170MHz, X-pol., H65° / V7.5°



STANDARD MOUNTING KIT

No.	DESCRIPTION	QTY
1	MONO - POLE ADAPTOR	1
2	HEX CAP BOLT, M8x1.25	6
3	SPRING WASHER, M8	6
4	PLANE WASHER, M8	6

MOUNTING INTERFACE